

Technical Specification OMS Hypodrive AZHP 1 - 3



ANTRIEBSTECHNIK

(technical modification reserved; update 09/05)

Gear:

input-revolution, max : $n = 2500 \text{ min}^{-1}$
 efficiency : $\eta, n = > 92 - 96 \%$
 typical backlash range: 4 to 8 arc. minutes
 sound pressure level (1500 min^{-1} / nominal load) : $L_{pA} = 62 \text{ dB(A)}$

		AZHP 3				AZHP 2			AZHP 1
car suspension		2 : 1		1 : 1	2 : 1	1 : 1	1 : 1	2 : 1/ 1 : 1	
gear ratio	i	13,57	18,99	24,68	36,85	18,99+24,68	28,43	36,94	14,67
output shaft max. torque	T	2000 Nm	2800 Nm	3700 Nm	5500 Nm	1700 Nm	2000 Nm	2500 Nm	930 Nm
max. axle weight	F	50 kN	53 kN	53 kN	65 kN	42 kN	42 kN	42 kN	35 kN
for car load up to	G	1600 kg	2000 kg	2500 kg	1600 kg	1600 kg	900 kg	1000 kg	630 kg
for car speed up to	v	2 m/s			2 m/s			1,6 m/s	

Motor :

three phase induction motor: (for frequency inverter only)
 4-pole, IP 54, motor protection: PTC, integral fan
 motor-nominal torque up to: T = 118 Nm
 encoder : HTL, TTL, sine/cosine

Brake:

2 circuit shoe safety brake with solenoid or
 2 circuit disc brake, depending on type of gear.
 (separate or common operation depending on application)

Traction sheave:

radius: D = 400, 450, 500, 560, 650 mm *)
 weight, approx.: G = 40, 48, 59, 62, 90 kg *)
 width: C = 112 mm *)
 rope diameter: D, s = 10, 11 mm *)
 number of ropes : n = 4 - 7 *)
 *) options upon request

Further information on request.

For modernisation applications the machines can be equipped with an auxiliary disk brake attached to the traction sheave.

Contact:

OMS Antriebstechnik OHG
 Bahnhofstrasse 12
 D - 36219 Cornberg
 tel.: +49 (0) 5650 / 969 - 0
 fax: +49 (0) 5650 / 969 - 106
 E-mail: oms.antrieb@t-online.de
 Internet: www.oms-antrieb.de

Contact:
 sales: 05650/969 - 133

Distributer:

IbA Lift Components GmbH
 Lindenstraße 39b
 D- 16556 Borgsdorf
 tel.: +49 (0) 3303 / 50 57 57
 fax.: +49 (0) 3303 / 50 5758
 E-mail: info@iba-lift.de

Contact:
 Technical & sales: Herr Abraham


ATB Benelux B.V.
 Tasveld 14
 NL - 8271 RW IJsselmuiden
 tel.: +31 (0) 38 4432 110
 fax.: +31 (0) 38 4432 111
 E-mail: hwezenberg@atbaandrijftechniek.nl

Contact :
 Technical & sales: Hr. Wezenberg

RST Elektronik GmbH
 Tannenstraße 11
 D - 74229 Oedheim
 tel.: +49 (0) 7136 99 12-0
 fax.: +49 (0) 7136 99 12 10
 E-mail : info@rst-elektronik.de

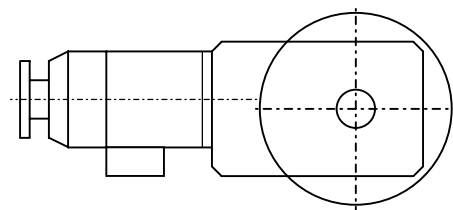
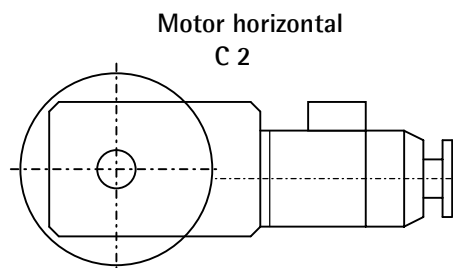
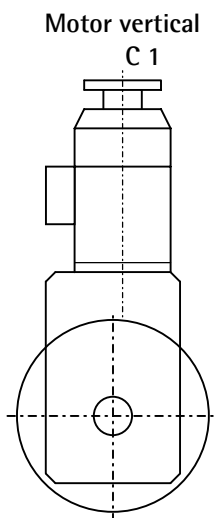
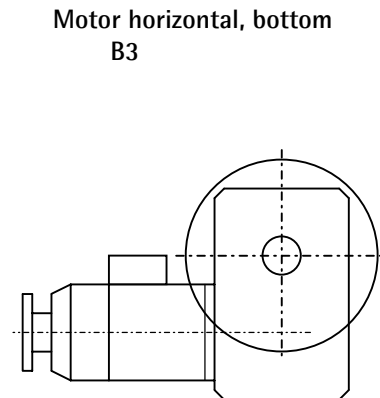
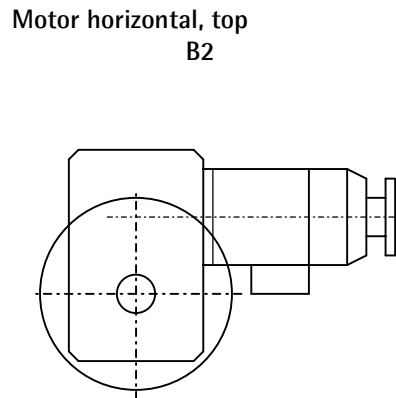
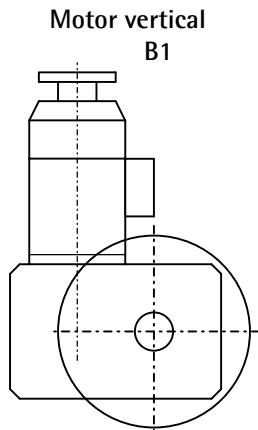
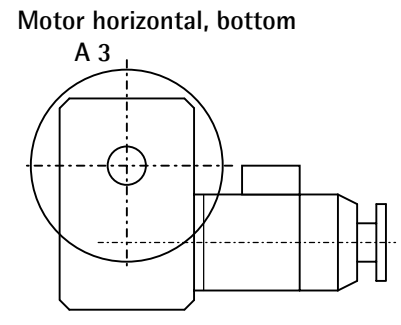
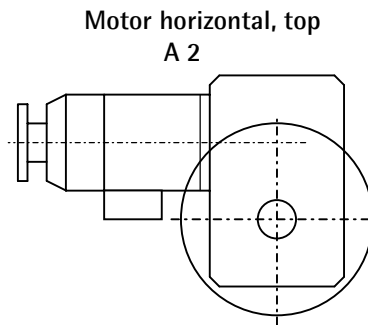
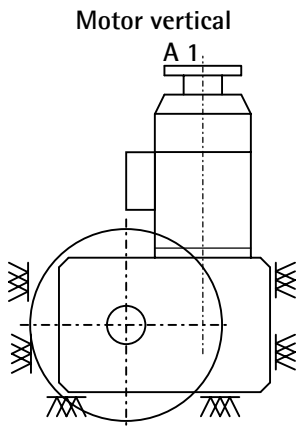
Example for Positioning and Supporting of Drive Unit

(View of drive unit with traction wheel in front side)

(Force of rope possible in down \uparrow and up \downarrow direction or  diagonally)

The gearbox has 4 fastening holes on each of the 3 mounting sides.

When applying forces from the side, additionally a support for these forces at that side is needed.



Positioning of the *omsHypodrive*:

AZHP 3: A1 – A3 / B1 – B3

AZHP 2: A1 – A3 / B1 – B3 / C1 – C3

AZHP 1: A1 – A3